

Update Instructions

This unit can be updated through webGUI and USB.

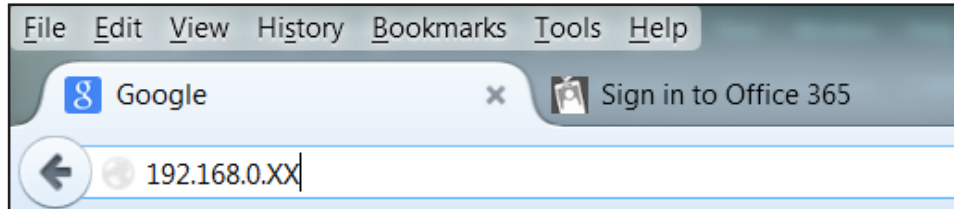
- Needed items (webGUI):
 - New firmware - Downloaded from <http://www.atlona.com/product/AT-HDVS-200-TX> or <http://www.atlona.com/product/AT-HDVS-200-TX-WP>
 - IP address of the unit
 - Computer on the same network as the unit
 - Username and password to access the webGUI of the unit
- Needed items (USB):
 - New firmware - Downloaded from <http://www.atlona.com/product/AT-HDVS-200-TX> or <http://www.atlona.com/product/AT-HDVS-200-TX-WP>
 - Mini USB to USB A cable
 - Computer with a USB port
 - Unit and optional power supply or HBaseT cable connected to PoE receiver

Updating (webGUI)

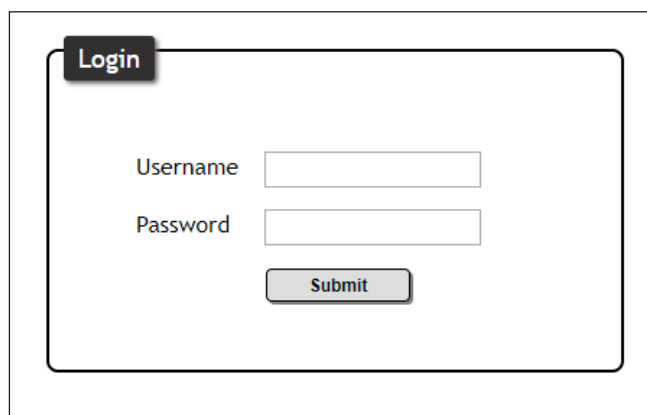
1. Plug a LAN cable into the unit and your network router (if not already connected to the network)
2. Type the IP address of the switcher into a web browser (as seen below)



NOTE: Computer must be on the same network as the switcher to access through IP



IMPORTANT: If any stability issues are experienced, disable any anti-virus or firewall that may be interfering with network communication to the switcher. Once set up is done and the webGUI is no longer being used, the firewall and anti-virus can be re-enabled.



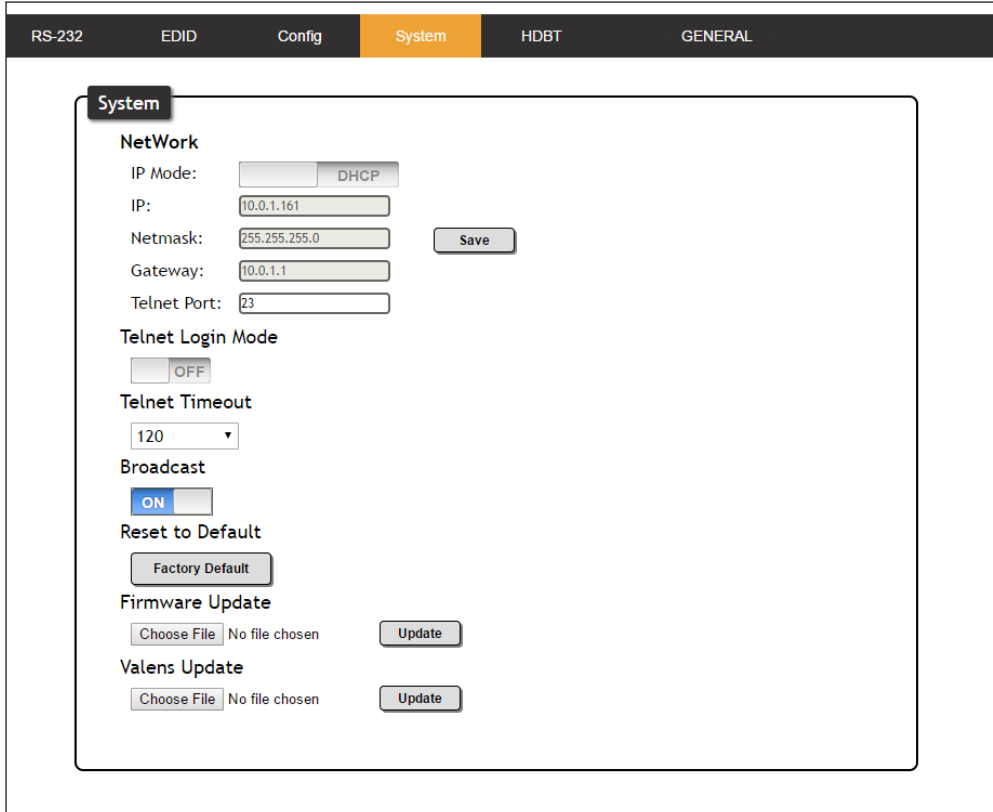
A login screen will appear (this is the same log in for admin and general users).

3. Login using the username and password (this would have been set up during installation)

Update Instructions

Once logged in:

4. Select the link named 'System'



5. Select the Choose File button under Firmware Update
6. Select the new firmware file that was downloaded either from atlona.com or box.com
7. Press the Update button

A progress bar will display as the update is completed. After the update is complete, if a restart is required the required, the webGUI will display a prompt. The firmware update is now complete and the unit is ready to be used.

Updating (USB)

The firmware page displays the switcher, HDBaseT transmitter chips, and HDBaseT receivers firmware versions to make it easier to see what needs to be updated.

1. Disconnect power from the unit.
2. Connect a mini-USB type-B to USB type-A type cable from the FW port on the HDVS-200 to a USB port on the computer which contains the firmware file

Note: To access the USB port on the HDVS-200-TX-WP, remove the front face plate

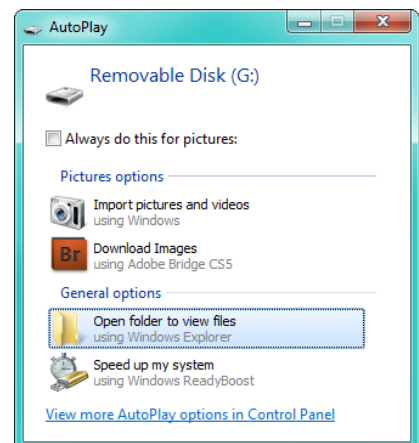
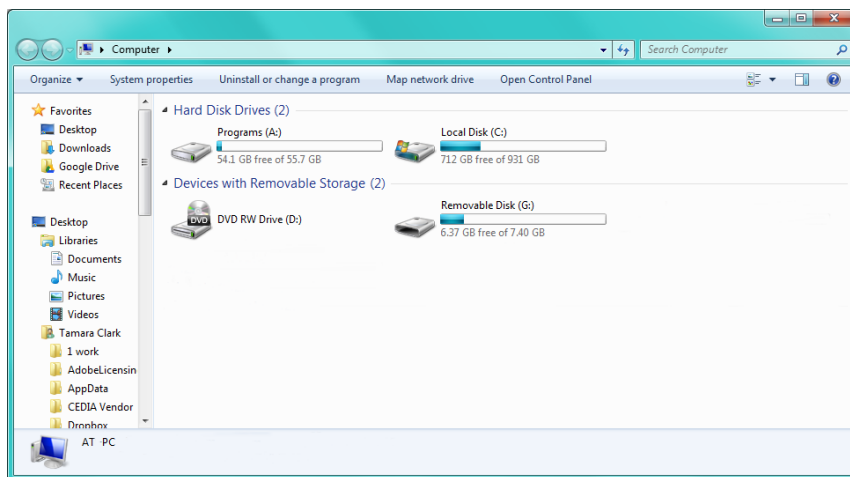
3. Press and hold the INPUT button
4. While holding down the INPUT button, power the HDVS-200 by connecting an Ethernet cable from the HDBaseT OUT port, on the HDVS-200, to an HDBaseT power source

Update Instructions

- Continue holding the INPUT button until the internal disk folder for the HDVS-200 is displayed. If the AutoPlay dialog is displayed, then click the “Open folder to view files” option.
- Remove any existing firmware files in the folder
- Drag and drop the firmware (*.bin) file into the folder



NOTE: If the computer does not auto detect the connection, open “My Computer” and select the USB drive.



- Disconnect the USB cable from the HDVS-200 and the computer
- Power-cycle the HDVS-200 by disconnecting and reconnecting the power

The update process is complete and the unit is ready to be used